

ALBANY POLICE DEPARTMENT CRIME ANALYSIS

“Combating Crime and Protecting Lives”

Prepared By the Crime Analysis Unit of The Albany Police Department

****These numbers may be updated from month to month as records updates occur****

2013

Month of April

Distribution: CITY MANAGER, ASST. CITY MANAGERS

CHIEF OF POLICE
DEPUTY CHIEF - INVESTIGATIVE
DEPUTY CHIEF – UNIFORM
DEPUTY CHIEF – SUPPORT SERVICES
MAJOR - INTERNAL AFFAIRS
INVESTIGATIONS CAPTAINS
UNIFORM CAPTAINS
ACCREDITATION MANAGER

SPECIAL OPERATIONS CAPT.
FAMILY PROTECTION
RECORDS SUPERVISOR
PLANNING & RESEARCH
TRAINING SUPERVISOR
CHIEF'S ADMIN ASSISTANT
SUPPORT SERVICES LT

***Information Included in this Report Reflects
Compliance with UCR Reporting Standards**

The information contained in this report is primarily raw data until calendar year reporting.

Please contact David Sparks, APD Crime Analyst for questions regarding this report @ 431-2878.

Monthly Part I Crimes

Albany Police Department

Part I Crimes Committed During the Month of April 2013 with Comparisons of April 2012 & 2011

| Actual Offenses | 2013 2012 Month to Month | | +/- Change | | 2013 2011 Month to Month | | +/- Change | |
|-----------------------------|-----------------------------|---------------|-------------|---------------|-----------------------------|---------------|------------|--------------|
| Offenses Committed | April 2013 | April 2012 | # | % | April 2013 | April 2011 | # | % |
| Homicide | 2 | 1 | 1 | 100.00 | 2 | 1 | 1 | 100.00 |
| Rape | 0 | 1 | -1 | -100.00 | 0 | 2 | -2 | -100.00 |
| Robbery | 13 | 17 | -4 | -23.53 | 13 | 19 | -6 | -31.58 |
| Aggravated Assault | 60 | 43 | 17 | 39.53 | 60 | 40 | 20 | 50.00 |
| Violent Crime Total | 75 | 62 | 13 | 20.97 | 75 | 62 | 13 | 20.97 |
| Arson | 1 | 3 | -2 | -66.67 | 1 | 2 | -1 | -50.00 |
| Burglary | 88 | 137 | -49 | -35.77 | 88 | 122 | -34 | -27.87 |
| Larceny | 259 | 306 | -47 | -15.36 | 259 | 242 | 17 | 7.02 |
| Auto Theft | 15 | 24 | -9 | -37.50 | 15 | 7 | 8 | 114.29 |
| Property Crime Total | 363 | 470 | -107 | -22.77 | 363 | 373 | -10 | -2.68 |
| Crime Trend Total | 438 | 532 | -94 | -17.67 | 438 | 435 | 3 | 0.69 |

Part I Case Clearances During the Month of April 2013 with Comparisons of April 2012 & 2011

| | 2013 | 2012 | 2011 | 2013 | 2012 | 2011 |
|-------------------------------|--------------------|--------------------|--------------------|--------------------|--------------------|--------------------|
| Offenses Cleared | April # Cleared | April # Cleared | April # Cleared | April % Cleared | April % Cleared | April % Cleared |
| Homicide | 1 | 0 | 1 | 50.00% | 0.00% | 100.00% |
| Rape | 0 | 0 | 0 | *NC | 0.00% | 0.00% |
| Robbery | 4 | 2 | 4 | 30.77% | 11.76% | 21.05% |
| Aggravated Assault | 19 | 13 | 17 | 31.67% | 30.23% | 42.50% |
| Violent Crime Cleared | 24 | 15 | 22 | 32.00% | 24.19% | 35.48% |
| Arson | 0 | 0 | 0 | 0.00% | 0.00% | 0.00% |
| Burglary | 7 | 15 | 17 | 7.95% | 10.95% | 13.93% |
| Larceny | 45 | 55 | 37 | 17.37% | 17.97% | 15.29% |
| Auto Theft | 5 | 5 | 1 | 33.33% | 20.83% | 14.29% |
| Property Crime Cleared | 57 | 75 | 55 | 15.70% | 15.96% | 14.75% |
| Clearance Total | 81 | 90 | 77 | 18.49% | 16.92% | 17.70% |

* The Crime Trend and Clearance Totals do not include percentages for numbers not divisible by 0.

Year to Date Part I Crimes

Albany Police Department

| Part I Crimes Committed Year-to-date as of April 2013 with Comparisons of April 2012 & 2011 | | | | | | | | |
|--|----------------------|---------------|----------------------|--------------|------------|--|---------------|---------------|
| Actual Offenses | 2013 Year to Date | | 2012 Year to Date | | +/- Change | | | |
| | April 2013 | April 2012 | # | % | | | April 2013 | April 2011 |
| Offenses Committed | | | | | | | # | % |
| Homicide | 4 | 2 | 2 | 100.00 | | | 4 | 5 |
| Rape | 3 | 7 | -4 | -57.14 | | | 3 | 12 |
| Robbery | 51 | 69 | -18 | -26.09 | | | 51 | 55 |
| Aggravated Assault | 165 | 159 | 6 | 3.77 | | | 165 | 132 |
| | | | | | | | | |
| Violent Crime Total | 223 | 237 | -14 | -5.91 | | | 223 | 204 |
| | | | | | | | | |
| Arson | 6 | 8 | -2 | -25.00 | | | 6 | 4 |
| Burglary | 321 | 423 | -102 | -24.11 | | | 321 | 372 |
| Larceny | 1074 | 1061 | 13 | 1.23 | | | 1074 | 904 |
| Auto Theft | 48 | 79 | -31 | -39.24 | | | 48 | 43 |
| | | | | | | | | |
| Property Crime Total | 1449 | 1571 | -122 | -7.77 | | | 1449 | 1323 |
| | | | | | | | | |
| Crime Trend Total | 1672 | 1808 | -136 | -7.52 | | | 1672 | 1527 |

| Part I Case Clearances Year-to-date as of April 2013 with Comparisons of April 2012 & 2011 | | | | | | | | |
|---|--------------------|--------------------|--------------------|--------------------|--------------------|--------------------|--|--|
| | 2013 | 2012 | 2011 | | | | | |
| Offenses Cleared | April # Cleared | April # Cleared | April # Cleared | 2013 | 2012 | 2011 | | |
| | | | | April % Cleared | April % Cleared | April % Cleared | | |
| Homicide | 1 | 1 | 5 | 25.00% | 50.00% | 100.00% | | |
| Rape | 2 | 4 | 11 | 66.67% | 57.14% | 91.67% | | |
| Robbery | 16 | 11 | 13 | 31.37% | 15.94% | 23.64% | | |
| Aggravated Assault | 60 | 73 | 59 | 36.36% | 45.91% | 44.70% | | |
| | | | | | | | | |
| Violent Crime Cleared | 79 | 89 | 88 | 35.43% | 37.55% | 43.14% | | |
| | | | | | | | | |
| Arson | 1 | 1 | 0 | 16.67% | 12.50% | 0.00% | | |
| Burglary | 38 | 44 | 55 | 11.84% | 10.40% | 14.78% | | |
| Larceny | 199 | 194 | 179 | 18.53% | 18.28% | 19.80% | | |
| Auto Theft | 12 | 14 | 8 | 25.00% | 17.72% | 18.60% | | |
| | | | | | | | | |
| Property Crime Cleared | 250 | 253 | 242 | 17.25% | 16.10% | 18.29% | | |
| | | | | | | | | |
| Clearance Total | 329 | 342 | 330 | 19.68% | 18.92% | 21.61% | | |

* The Crime Trend and Clearance Totals do not include percentages for numbers not divisible by 0.

Monthly Part II and Other Crimes

Albany Police Department

| Part II Crime Comparison of April 2013 Data with Previous Year/Month | | | | | | | | | |
|--|------------|------------|-------|----------|--|------------|------------|-------|----------|
| Part II Crimes | April 2013 | April 2012 | +/- # | Change % | | April 2013 | March 2013 | +/- # | Change % |
| | | | | | | | | | |
| Disorderly Conduct | 56 | 80 | -24 | -30.00 | | 56 | 43 | 13 | 30.23 |
| Domestic Violence | 138 | 165 | -27 | -16.36 | | 138 | 95 | 43 | 45.26 |
| Disorderly w/intoxicated | 0 | 0 | 0 | *NC | | 0 | 0 | 0 | *NC |
| D.U.I. | 8 | 9 | -1 | -11.11 | | 8 | 5 | 3 | 60.00 |
| Child Molestation | 1 | 4 | -3 | -75.00 | | 1 | 6 | -5 | -83.33 |
| Cruelty to Child | 3 | 8 | -5 | -62.50 | | 3 | 2 | 1 | 50.00 |
| Child Protec: Curfew | 0 | 0 | 0 | *NC | | 0 | 2 | -2 | -100.00 |
| Child Protec:Truancy | 0 | 0 | 0 | *NC | | 0 | 1 | -1 | -100.00 |
| Interfere w/Custody | 3 | 0 | 3 | *NC | | 3 | 1 | 2 | 200.00 |
| Child Abandonment | 0 | 0 | 0 | *NC | | 0 | 0 | 0 | *NC |
| Enticing a Child | 0 | 1 | -1 | -100.00 | | 0 | 0 | 0 | *NC |
| Forgery | 8 | 15 | -7 | -46.67 | | 8 | 5 | 3 | 60.00 |
| Noise Ordinance Viol. | 0 | 1 | -1 | -100.00 | | 0 | 0 | 0 | *NC |
| Harassing Phone Calls | 4 | 14 | -10 | -71.43 | | 4 | 10 | -6 | -60.00 |
| Loitering | 2 | 2 | 0 | 0.00 | | 2 | 9 | -7 | -77.78 |
| Missing Persons | 25 | 37 | -12 | -32.43 | | 25 | 24 | 1 | 4.17 |
| Runaway | 1 | 2 | -1 | -50.00 | | 1 | 1 | 0 | 0.00 |
| Suicide | 0 | 0 | 0 | *NC | | 0 | 0 | 0 | *NC |
| Underage Poss./Consum. | 1 | 2 | -1 | -50.00 | | 1 | 0 | 1 | *NC |
| Criminal Damage | 14 | 48 | -34 | -70.83 | | 14 | 19 | -5 | -26.32 |
| Theft: Gas Drive Off | 0 | 1 | -1 | -100.00 | | 0 | 0 | 0 | *NC |
| Simple Assault | 7 | 9 | -2 | -22.22 | | 7 | 8 | -1 | -12.50 |
| Simple Battery | 79 | 81 | -2 | -2.47 | | 79 | 82 | -3 | -3.66 |
| Battery | 33 | 32 | 1 | 3.13 | | 33 | 29 | 4 | 13.79 |
| Obstruct/Hinder Police | 7 | 23 | -16 | -69.57 | | 7 | 10 | -3 | -30.00 |
| Sexual Battery | 0 | 2 | -2 | -100.00 | | 0 | 3 | -3 | -100.00 |
| Open Container | 12 | 13 | -1 | -7.69 | | 12 | 9 | 3 | 33.33 |
| Sodomy | 0 | 3 | -3 | -100.00 | | 0 | 1 | -1 | -100.00 |
| Statutory Rape | 2 | 1 | 1 | 100.00 | | 2 | 0 | 2 | *NC |
| Saggy Pants | 20 | 25 | -5 | -20.00 | | 20 | 14 | 6 | 42.86 |
| All Cases Not Listed | 417 | 515 | -98 | -19.03 | | 417 | 472 | -55 | -11.65 |
| | | | | | | | | | |
| Total Part II Crime | 841 | 1093 | -252 | -23.06 | | 841 | 851 | -10 | -1.18 |

** The Crime Trend and Clearance Totals do not include percentages for numbers not able to be divided by 0.

Year to Date Part II and Other Crimes

Albany Police Department

| Part II Crime Comparison of 2013 Year to Date with Previous Years 2012 & 2011 | | | | | | | | | |
|---|---------------|---------------|-------------|---------------|--|---------------|---------------|-------------|---------------|
| Part II Crimes | April 2013 | April 2012 | +/- # | Change % | | April 2013 | April 2011 | +/- # | Change % |
| Disorderly Conduct | 235 | 305 | -70 | -22.95 | | 235 | 257 | -22 | -8.56 |
| Domestic Violence | 552 | 669 | -117 | -17.49 | | 552 | 791 | -239 | -30.21 |
| Disorderly wh/intoxicated | 0 | 0 | 0 | *NC | | 0 | 1 | -1 | -100.00 |
| D.U.I. | 37 | 51 | -14 | -27.45 | | 37 | 57 | -20 | -35.09 |
| Child Molestation | 10 | 15 | -5 | -33.33 | | 10 | 15 | -5 | -33.33 |
| Child Cruelty | 8 | 26 | -18 | -69.23 | | 8 | 16 | -8 | -50.00 |
| Curfew | 2 | 1 | 1 | 100.00 | | 2 | 3 | -1 | -33.33 |
| Truancy | 1 | 4 | -3 | -75.00 | | 1 | 5 | -4 | -80.00 |
| Interfere w/Custody | 5 | 3 | 2 | 66.67 | | 5 | 2 | 3 | 150.00 |
| Child Abandonment | 0 | 0 | 0 | *NC | | 0 | 0 | 0 | *NC |
| Enticing a Child | 0 | 2 | -2 | -100.00 | | 0 | 1 | -1 | -100.00 |
| Forgery | 34 | 67 | -33 | -49.25 | | 34 | 48 | -14 | -29.17 |
| Noise Ordinance Viol. | 0 | 3 | -3 | -100.00 | | 0 | 1 | -1 | -100.00 |
| Harassing Phone Calls | 25 | 53 | -28 | -52.83 | | 25 | 49 | -24 | -48.98 |
| Loitering | 20 | 11 | 9 | 81.82 | | 20 | 5 | 15 | 300.00 |
| Missing Persons | 92 | 133 | -41 | -30.83 | | 92 | 127 | -35 | -27.56 |
| Runaway | 4 | 4 | 0 | 0.00 | | 4 | 3 | 1 | 33.33 |
| Suicide | 1 | 1 | 0 | 0.00 | | 1 | 2 | -1 | -50.00 |
| Underage Poss./Consum. | 8 | 4 | 4 | 100.00 | | 8 | 16 | -8 | -50.00 |
| Criminal Damage | 70 | 111 | -41 | -36.94 | | 70 | 93 | -23 | -24.73 |
| Theft: Gas Drive Off | 3 | 9 | -6 | -66.67 | | 3 | 11 | -8 | -72.73 |
| Simple Assault | 28 | 17 | 11 | 64.71 | | 28 | 48 | -20 | -41.67 |
| Simple Battery | 314 | 318 | -4 | -1.26 | | 314 | 342 | -28 | -8.19 |
| Battery | 122 | 128 | -6 | -4.69 | | 122 | 112 | 10 | 8.93 |
| Obstruction of Officer | 53 | 72 | -19 | -26.39 | | 53 | 59 | -6 | -10.17 |
| Sexual Battery | 4 | 6 | -2 | -33.33 | | 4 | 13 | -9 | -69.23 |
| Open Container | 36 | 53 | -17 | -32.08 | | 36 | 44 | -8 | -18.18 |
| Sodomy | 2 | 5 | -3 | -60.00 | | 2 | 1 | 1 | 100.00 |
| Statutory Rape | 3 | 1 | 2 | 200.00 | | 3 | 3 | 0 | 0.00 |
| Saggy Pants | 62 | 121 | -59 | -48.76 | | 62 | 10 | 52 | 520.00 |
| All Other Cases | 1978 | 2083 | -105 | -5.04 | | 1978 | 2211 | -233 | -10.54 |
| Total Part II Crime | 3709 | 4276 | -567 | -13.26 | | 3709 | 4346 | -637 | -14.66 |

** The Crime Trend and Clearance Totals do not include percentages for numbers not able to be divided by 0.

Monthly Part I Crimes by District

Albany Police Department

April 2013

| West Actual Offenses | | | |
|----------------------------|---------------|---------------|----------------------|
| Offenses Committed | April 2013 | March 2012 | Year to Date 2013 |
| Homicide | 0 | 0 | 0 |
| Rape | 0 | 0 | 0 |
| Robbery | 3 | 1 | 10 |
| Aggravated Assault | 26 | 18 | 57 |
| Violent Crime Total | 29 | 19 | 67 |
| Arson | 0 | 0 | 0 |
| Burglary | 29 | 14 | 83 |
| Larceny | 110 | 129 | 447 |
| Auto Theft | 6 | 2 | 21 |
| Property Crime Tot. | 145 | 145 | 551 |
| Crime Trend Total | 174 | 164 | 618 |

| Central Actual Offenses | | | |
|----------------------------|---------------|---------------|----------------------|
| Offenses Committed | April 2013 | March 2012 | Year to Date 2013 |
| Homicide | 0 | 2 | 2 |
| Rape | 0 | 1 | 1 |
| Robbery | 6 | 6 | 27 |
| Aggravated Assault | 20 | 13 | 71 |
| Violent Crime Total | 26 | 22 | 101 |
| Arson | 1 | 2 | 6 |
| Burglary | 24 | 15 | 82 |
| Larceny | 66 | 81 | 317 |
| Auto Theft | 6 | 1 | 14 |
| Property Crime Tot. | 97 | 99 | 419 |
| Crime Trend Total | 123 | 121 | 520 |

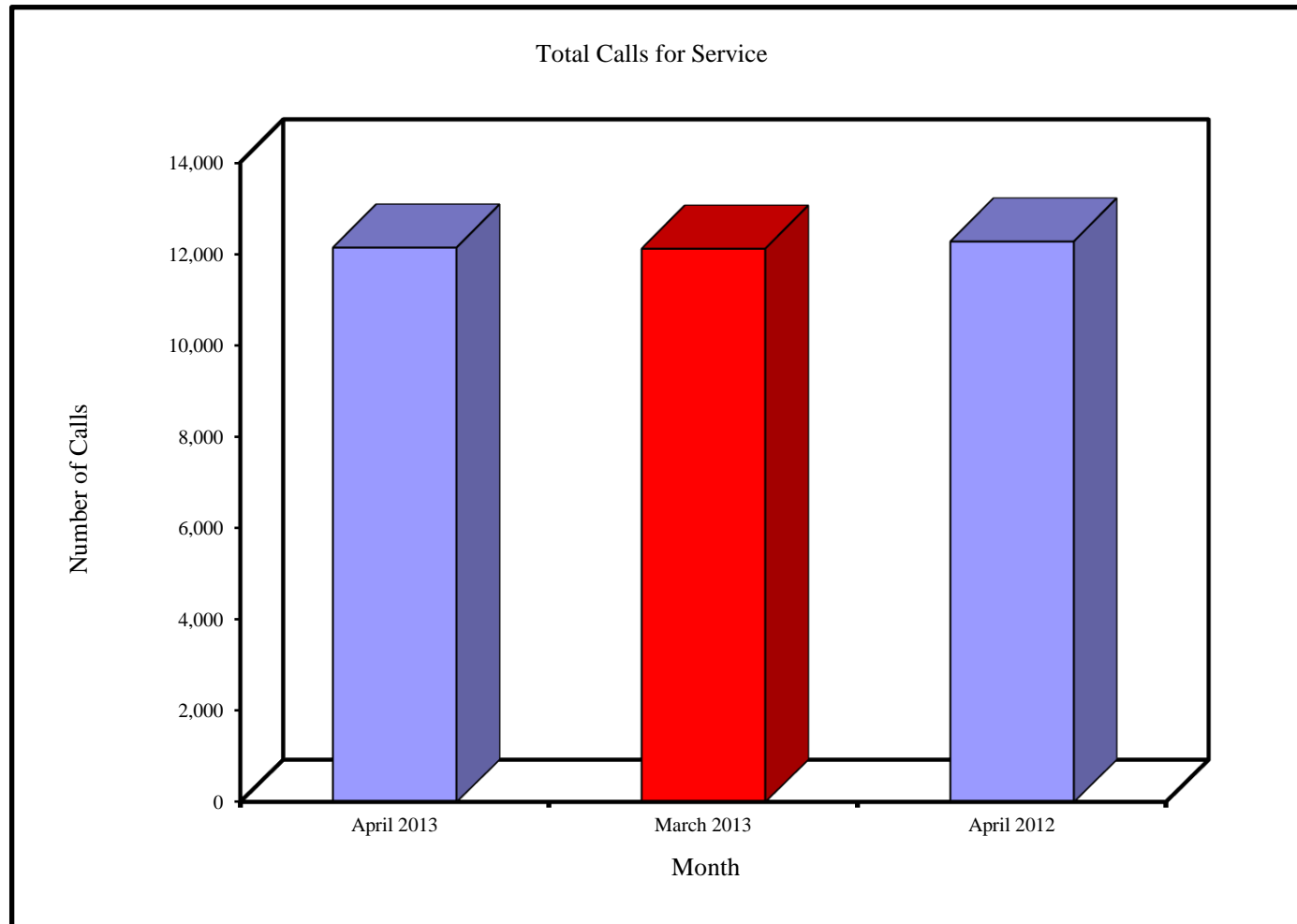
| East Actual Offenses | | | |
|----------------------------|---------------|---------------|----------------------|
| Offenses Committed | April 2013 | March 2012 | Year to Date 2013 |
| Homicide | 2 | 0 | 2 |
| Rape | 0 | 0 | 2 |
| Robbery | 4 | 4 | 14 |
| Aggravated Assault | 14 | 6 | 37 |
| Violent Crime Total | 20 | 10 | 55 |
| Arson | 0 | 0 | 0 |
| Burglary | 35 | 32 | 156 |
| Larceny | 83 | 82 | 310 |
| Auto Theft | 3 | 3 | 13 |
| Property Crime Tot. | 121 | 117 | 479 |
| Crime Trend Total | 141 | 127 | 534 |

Monthly Total Calls for Service

Albany Police Department

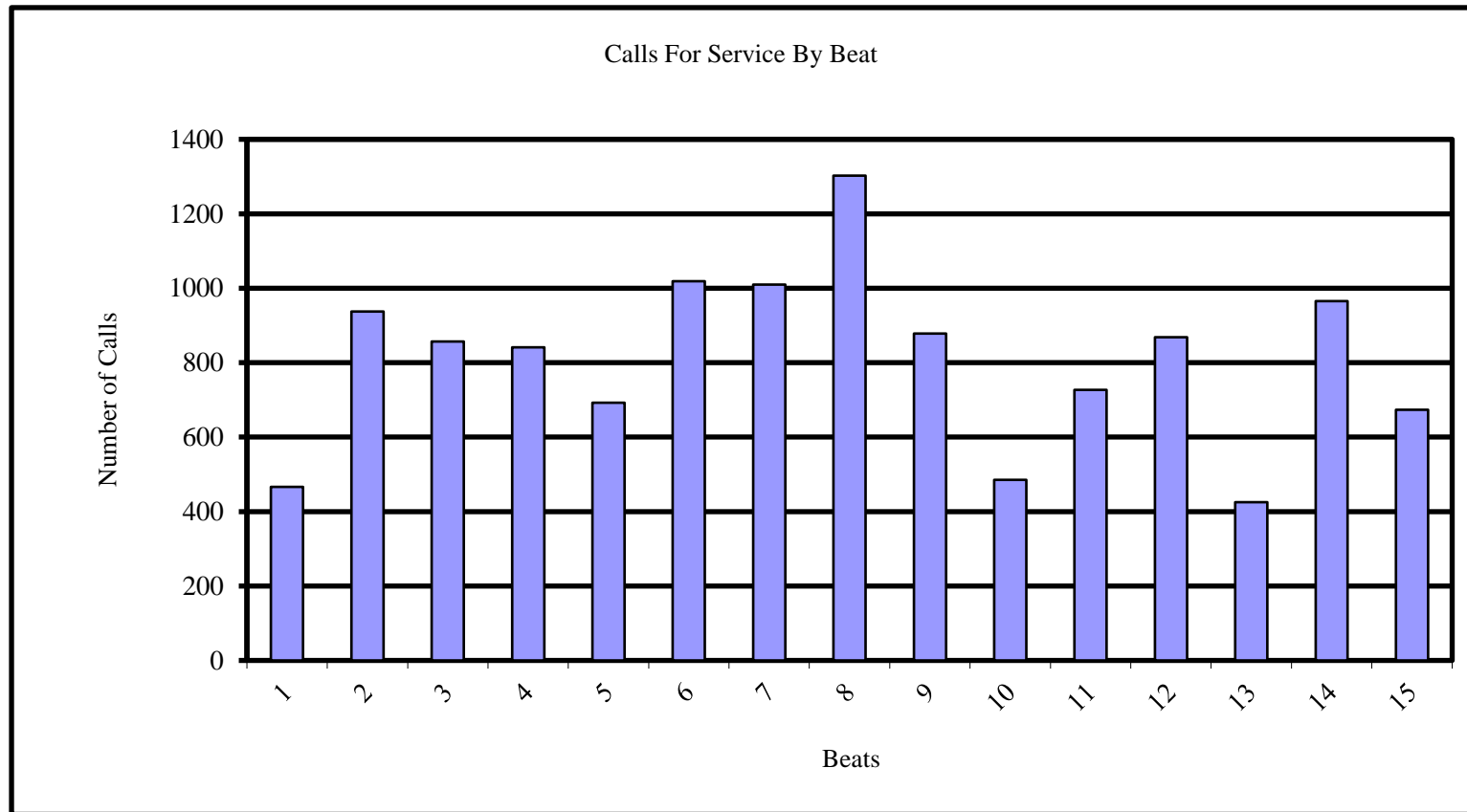
Total Calls For Service

| April 2013 | March 2013 | April 2012 |
|------------|------------|------------|
| 12,145 | 12,122 | 12,279 |



Monthly Calls for Service by Beats

Albany Police Department

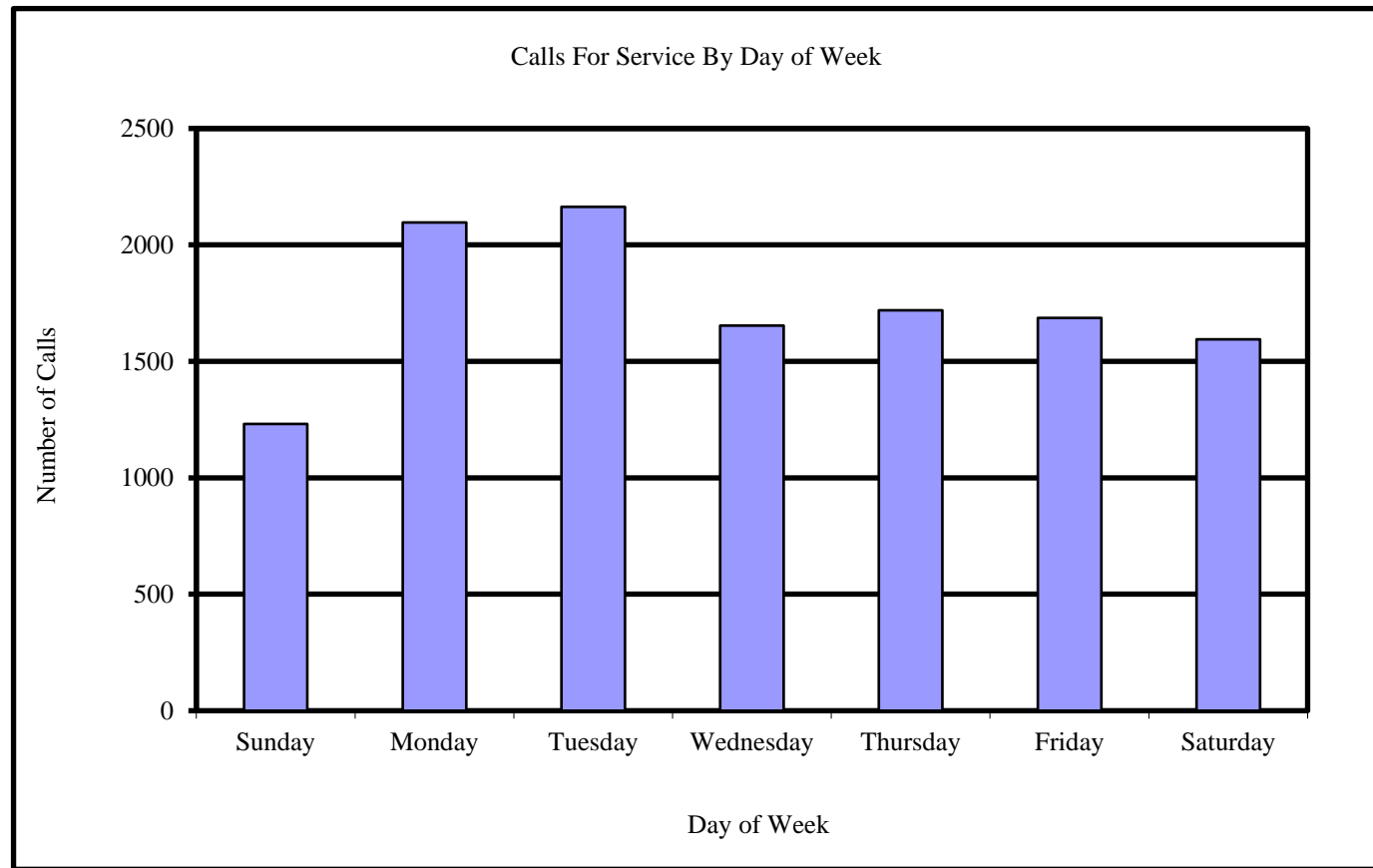


| Beats | 1 | 2 | 3 | 4 | 5 | 6 | 7 | 8 | 9 | 10 | 11 | 12 | 13 | 14 | 15 |
|---------------------|-----|-----|-----|-----|-----|------|------|------|-----|-----|-----|-----|-----|-----|-----|
| Calls in April 2013 | 466 | 937 | 857 | 841 | 692 | 1019 | 1010 | 1302 | 878 | 485 | 727 | 868 | 425 | 965 | 673 |

Monthly Calls for Service by Day of Week

Albany Police Department

| <u>Calls For Service</u> | |
|--------------------------|------------|
| Day | April 2013 |
| Sunday | 1232 |
| Monday | 2097 |
| Tuesday | 2163 |
| Wednesday | 1653 |
| Thursday | 1719 |
| Friday | 1687 |
| Saturday | 1594 |
| <hr/> | |
| | 12145 |

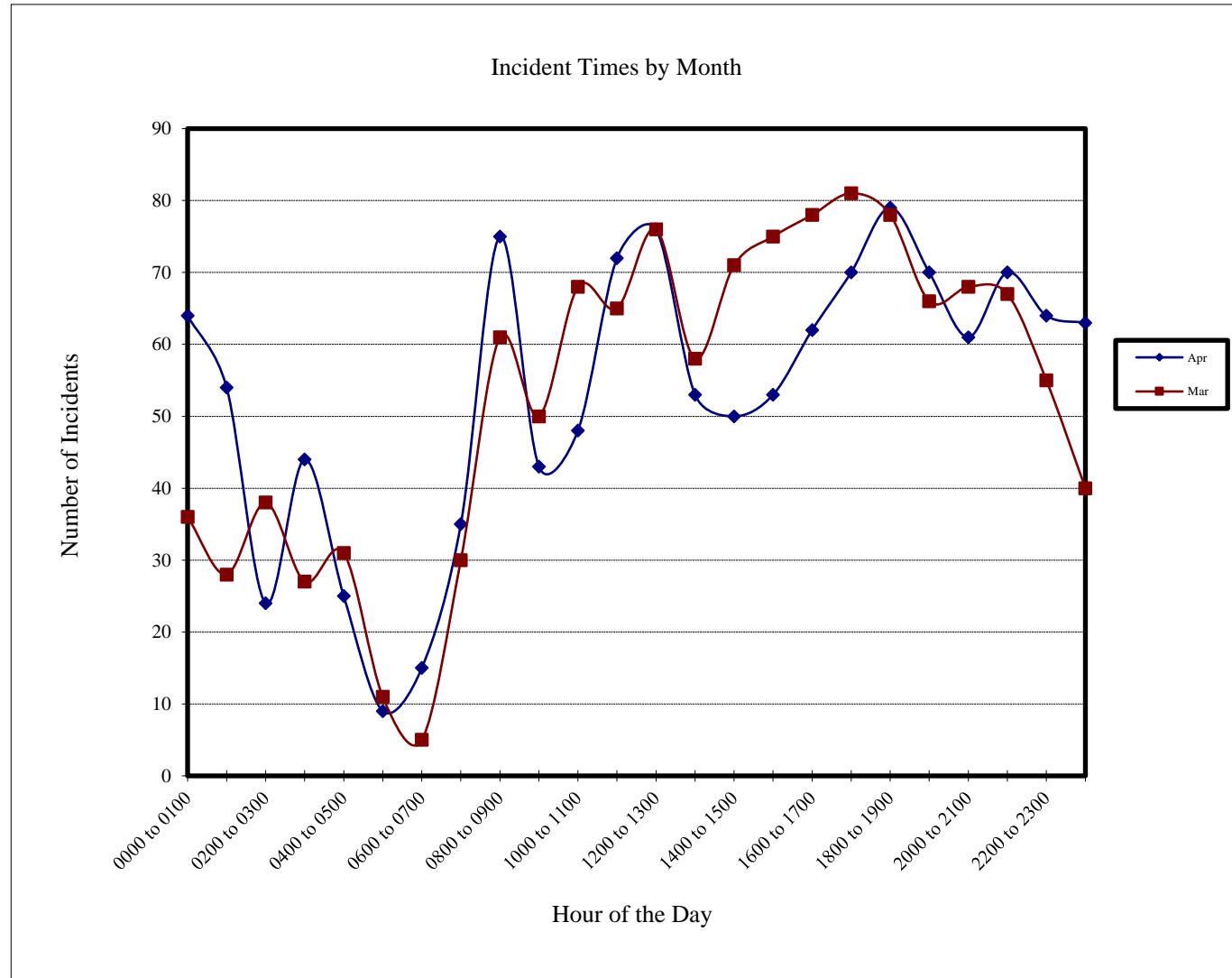


Incidents by Hour

Albany Police Department

Incident Times by Month

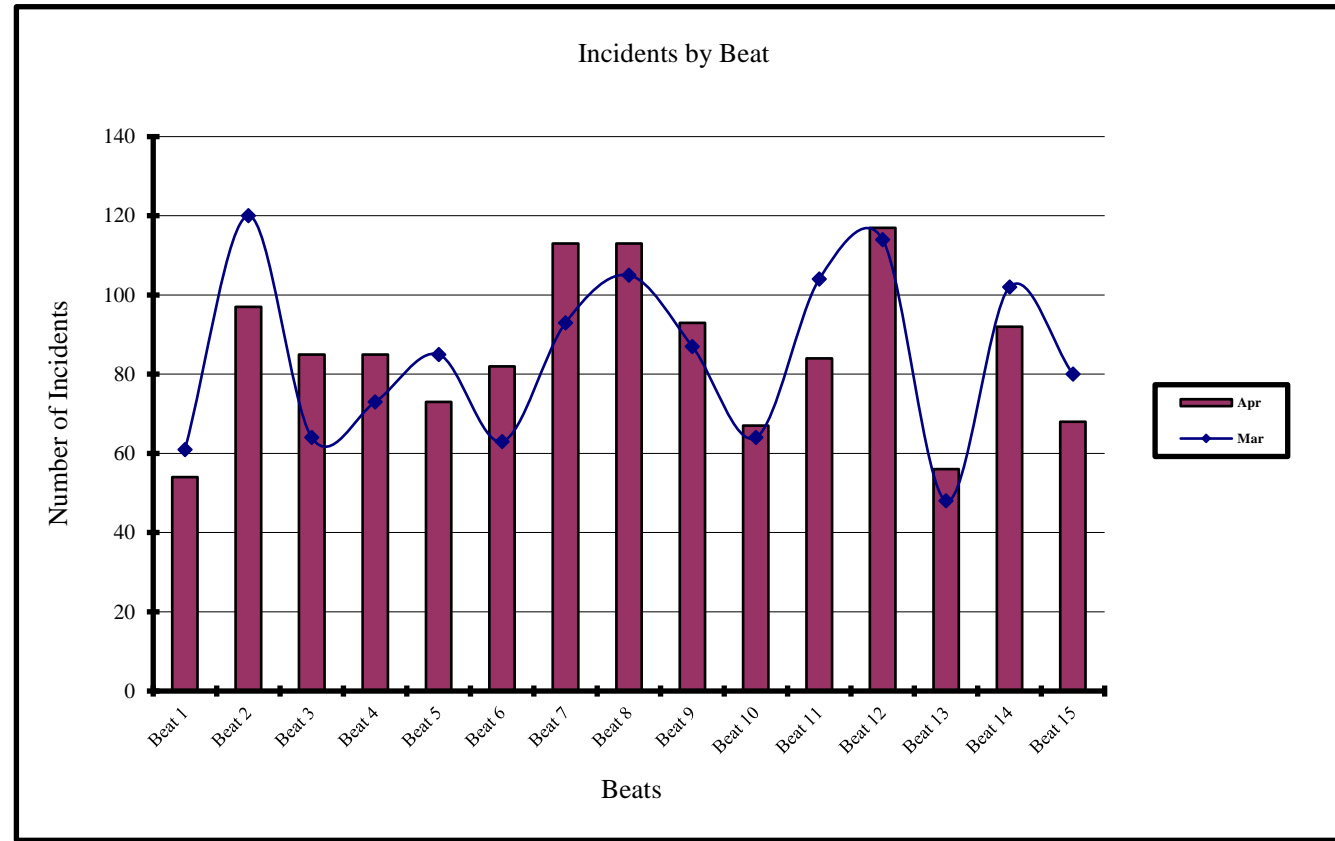
| Hour of Day | Apr 2013 | Mar 2013 |
|--------------|----------|----------|
| 0000 to 0100 | 64 | 36 |
| 0100 to 0200 | 54 | 28 |
| 0200 to 0300 | 24 | 38 |
| 0300 to 0400 | 44 | 27 |
| 0400 to 0500 | 25 | 31 |
| 0500 to 0600 | 9 | 11 |
| 0600 to 0700 | 15 | 5 |
| 0700 to 0800 | 35 | 30 |
| 0800 to 0900 | 75 | 61 |
| 0900 to 1000 | 43 | 50 |
| 1000 to 1100 | 48 | 68 |
| 1100 to 1200 | 72 | 65 |
| 1200 to 1300 | 76 | 76 |
| 1300 to 1400 | 53 | 58 |
| 1400 to 1500 | 50 | 71 |
| 1500 to 1600 | 53 | 75 |
| 1600 to 1700 | 62 | 78 |
| 1700 to 1800 | 70 | 81 |
| 1800 to 1900 | 79 | 78 |
| 1900 to 2000 | 70 | 66 |
| 2000 to 2100 | 61 | 68 |
| 2100 to 2200 | 70 | 67 |
| 2200 to 2300 | 64 | 55 |
| 2300 to 2400 | 63 | 40 |



Current and Previous Months Comparison of Incidents by Beat

Albany Police Department

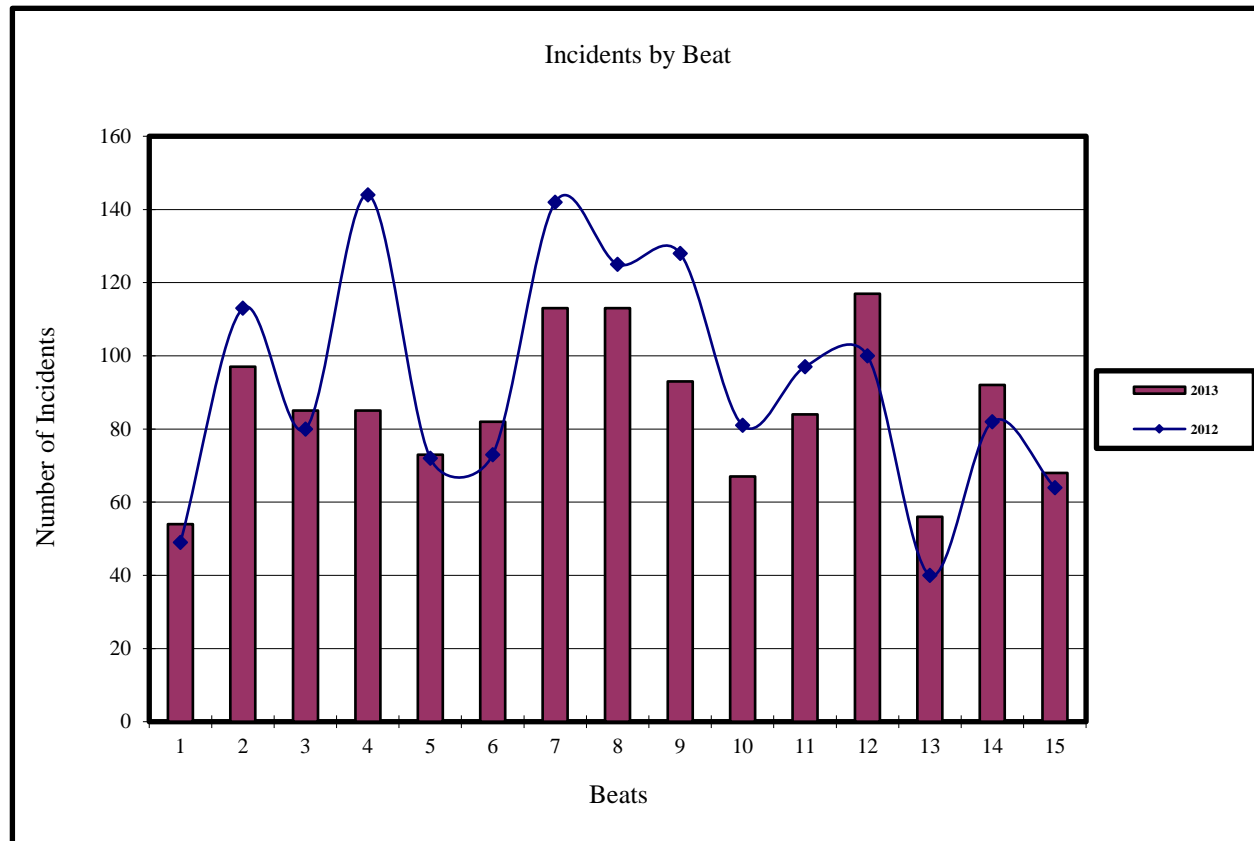
| Beat | Incidents | |
|---------|-----------|----------|
| | Apr 2013 | Mar 2013 |
| Beat 1 | 54 | 61 |
| Beat 2 | 97 | 120 |
| Beat 3 | 85 | 64 |
| Beat 4 | 85 | 73 |
| Beat 5 | 73 | 85 |
| Beat 6 | 82 | 63 |
| Beat 7 | 113 | 93 |
| Beat 8 | 113 | 105 |
| Beat 9 | 93 | 87 |
| Beat 10 | 67 | 64 |
| Beat 11 | 84 | 104 |
| Beat 12 | 117 | 114 |
| Beat 13 | 56 | 48 |
| Beat 14 | 92 | 102 |
| Beat 15 | 68 | 80 |



Current and Previous Year Comparision of Incidents by Beat

Albany Police Department

| Incidents | | |
|-----------|----------|----------|
| Beat | Apr 2013 | Apr 2012 |
| Beat 1 | 54 | 49 |
| Beat 2 | 97 | 113 |
| Beat 3 | 85 | 80 |
| Beat 4 | 85 | 144 |
| Beat 5 | 73 | 72 |
| Beat 6 | 82 | 73 |
| Beat 7 | 113 | 142 |
| Beat 8 | 113 | 125 |
| Beat 9 | 93 | 128 |
| Beat 10 | 67 | 81 |
| Beat 11 | 84 | 97 |
| Beat 12 | 117 | 100 |
| Beat 13 | 56 | 40 |
| Beat 14 | 92 | 82 |
| Beat 15 | 68 | 64 |



Current and Previous Month Comparison of Monthly Incidents by Day of Week

Albany Police Department

| Incidents | | |
|-----------|-------------|-------------|
| Day | Apr 2013 | Mar 2013 |
| Sunday | 181 | 184 |
| Monday | 214 | 152 |
| Tuesday | 203 | 153 |
| Wednesday | 162 | 168 |
| Thursday | 182 | 156 |
| Friday | 144 | 263 |
| Saturday | 193 | 187 |

